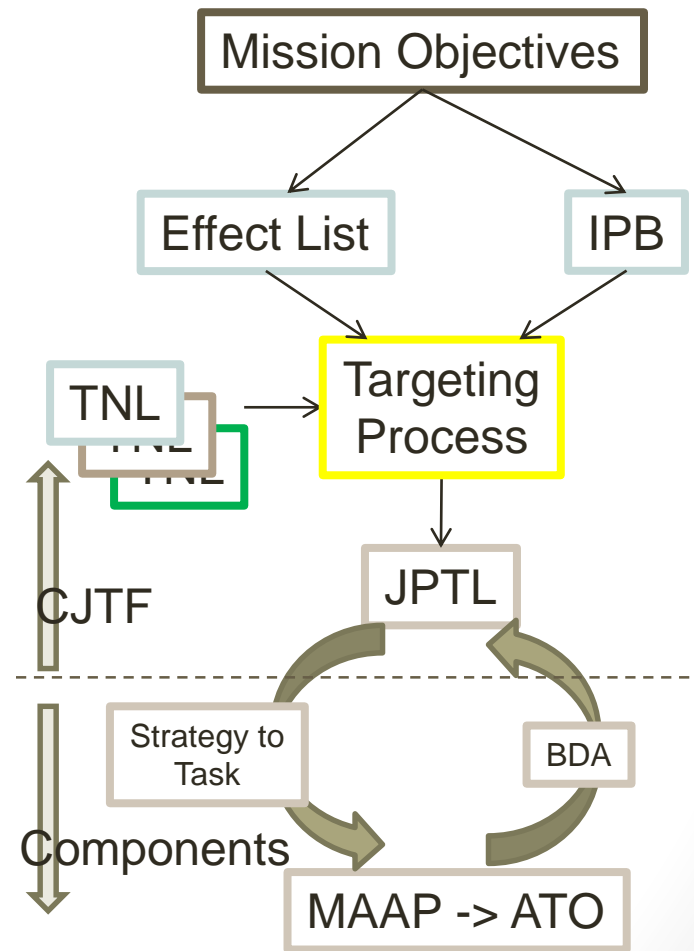
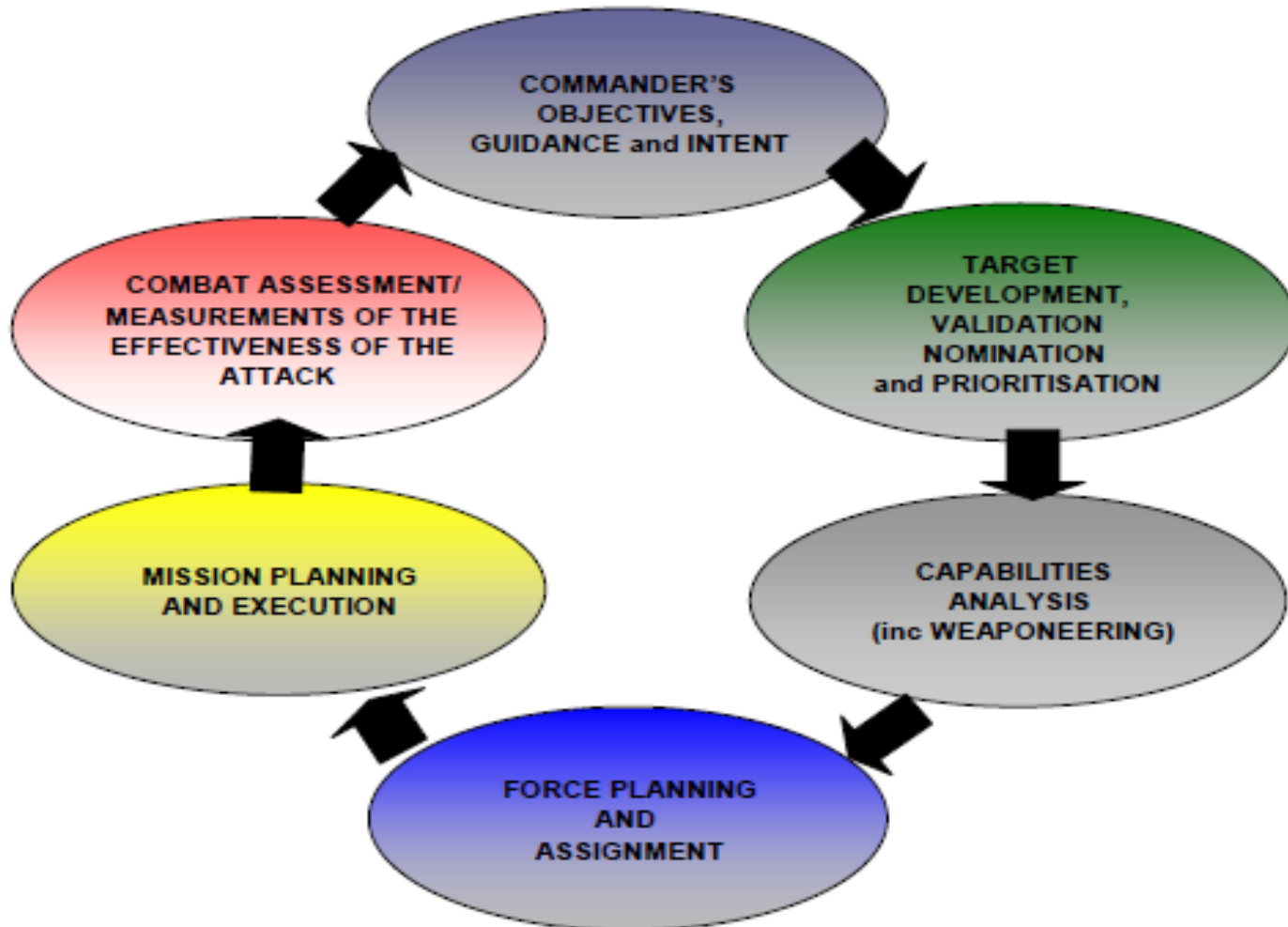


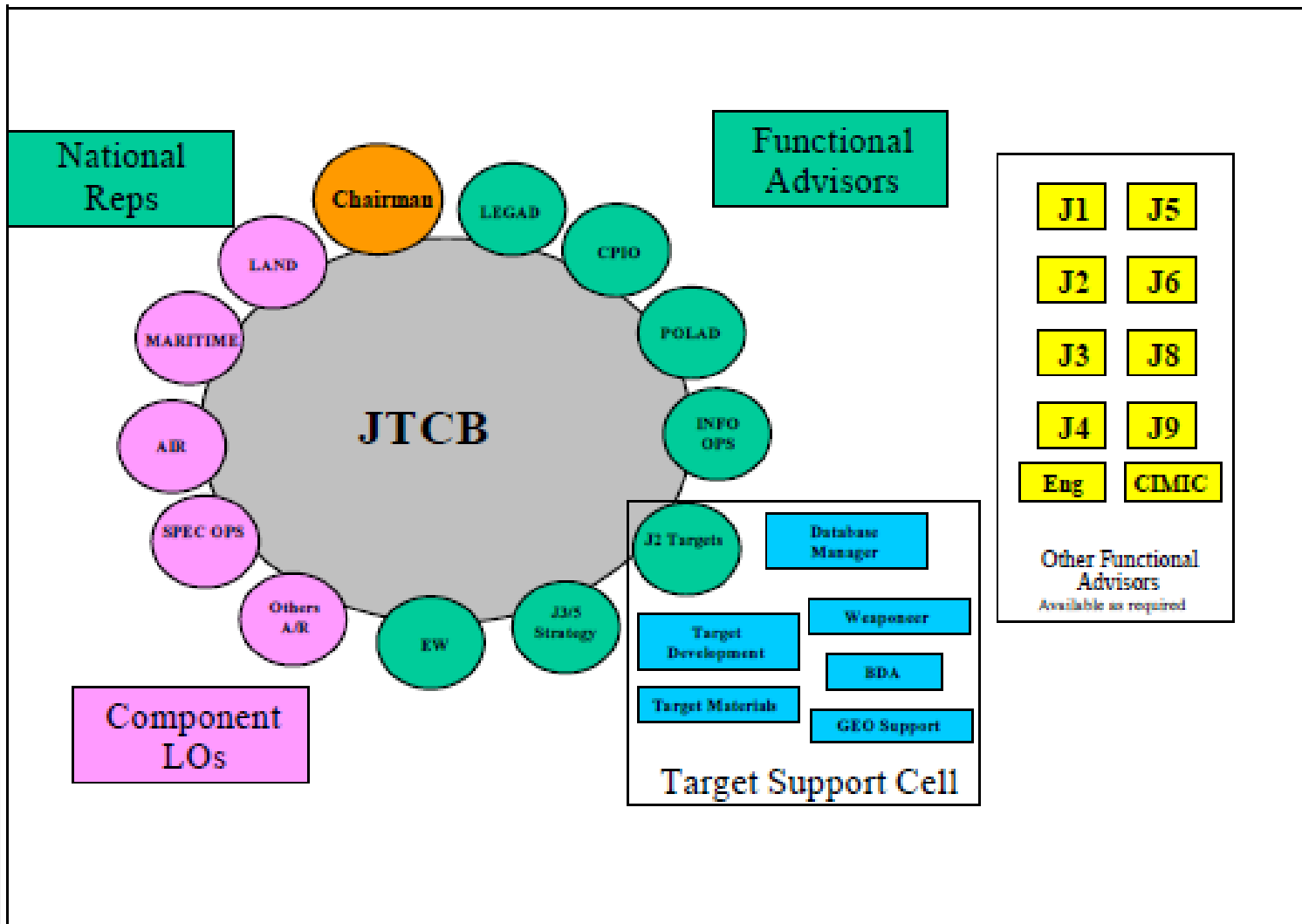
# Targeting



# Targeting cycle



# Joint Targeting Coordination Board



# Targeting: example

**Tgt: 12-3456-789**

**Description: MP JHQ**

**CDE: 5 (D:250, N:12)**

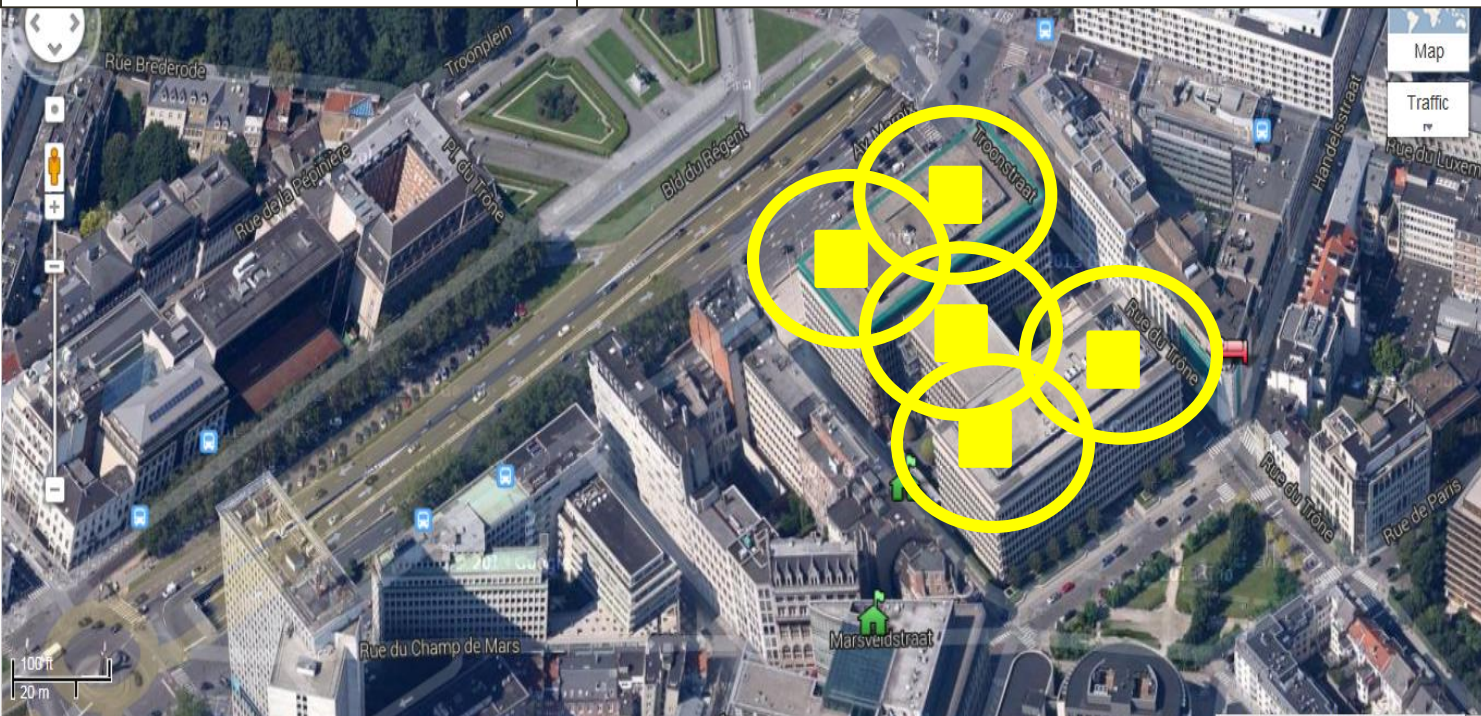
**WEAPON: Mk-82**

**Desired effect: neutralize**

**Intel reports: HUMINT/SIGINT**

**Aim: degrade C2 Capability**

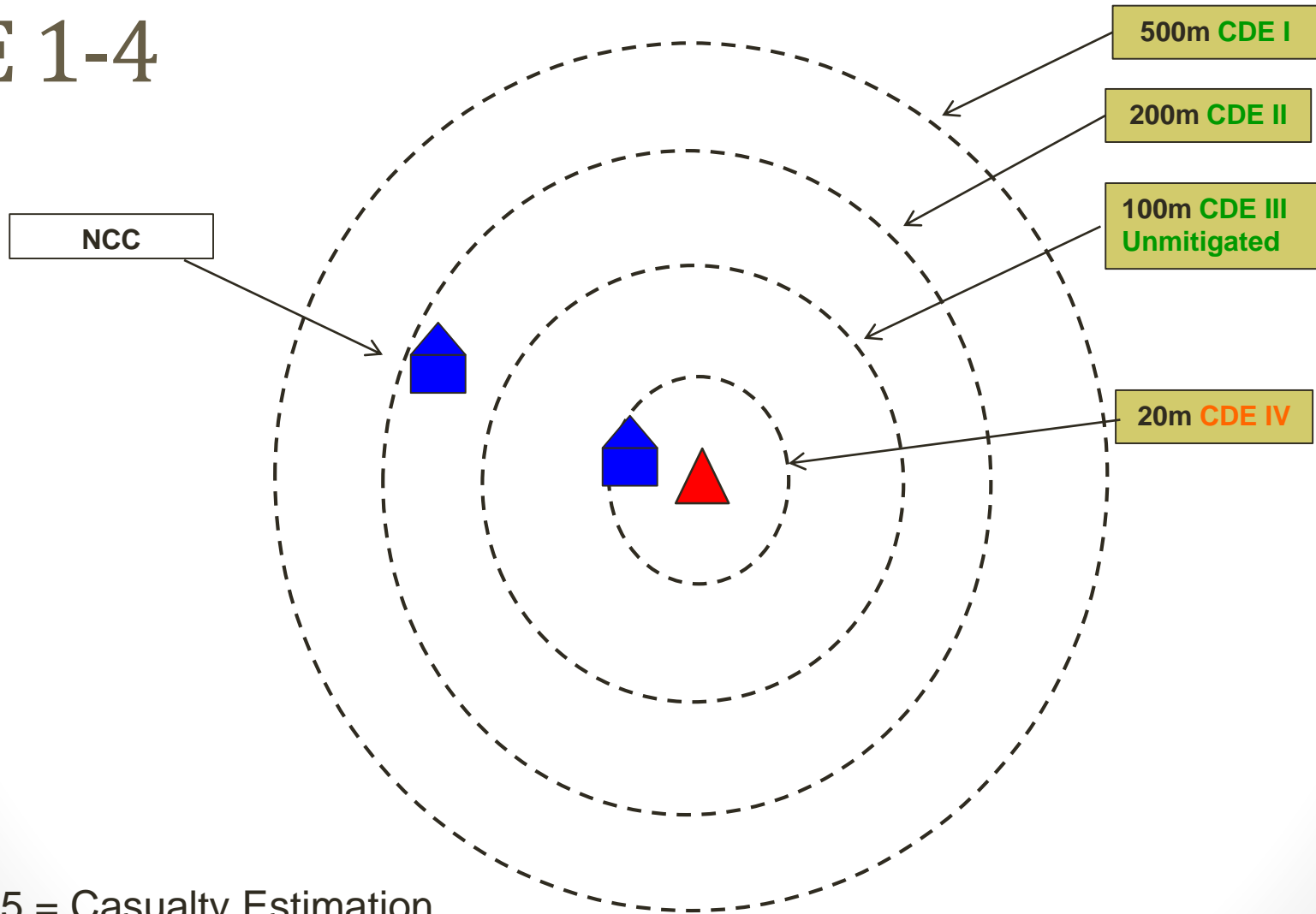
**Intent: neutralisation will degrade PQF capability to mount attacks against the Civ population in Tripoli**



**Night time attack only**

# Collateral Damage Estimation

## CDE 1-4



CDE 5 = Casualty Estimation



# Targeteer in practice

**Tgt: 12-3456-789**

**Description: PQF barracks**

**CDE: 2**

**WEAPON: Mk-82**

**Desired effect: neutralize**

**Intel reports: IMINT/SIGINT**

**Aim: neutralize PQF**

**Intent: neutralisation will degrade PQF capability to mount attacks against the Civ population in the Zlitan/Majer Area**



**No restrictions**